

PrO-V

a division of

CENTURION
SCIENTIFIC LIMITED

Mini Centrifuge range



Prime & Dual

2023

PrO-Analytical Centrifuge Features

Built to last, these Centrifuges have strong construction yet, offer a sleek modern design that will fit into any modern laboratory.

No compromises on quality, only the best components are used in the manufacturing process.

By working with all our suppliers, our reliability has been retained and improved to give all our range a 2 year warranty as standard.



CE marked. ISO 9001 & 13485

User features to PrO-Analytical series	Advantages
Bright blue LED display	Clarity & ease of use
Rotor recognition	1 rotor only, selected by software
10 acceleration rates & 10 deceleration rates	Sample assistance
99 program memory	Multi department & Users
Timer 0-9 Hours & Hold in 30 second increments	Total flexibility
Pulse short run	Fast pelleting
Run in speed (rpm) or rcf (G) in 10 rpm increments	Accuracy
Orientation acceleration rate	Prevents initial sample side deposits
Sound <60db (rotor dependent)	Quiet

Standard features to PrO-Analytical series	Advantages
Extra thick metal or acetal bowl	Easy clean & rust free
Port to lid	Tachometer speed certification
Alloy & steel frame (zinc coated)	Strong light & quiet
World leading industrial grade inverter	Reliability & strength
Best quality European brushless motor	Quiet, cool & reliable
High technology airflow (ambient mode)	Cooler running

All centrifuges have user accessible service sections to access all safety parameters

Safety features to PrO-Analytical series	Advantages
Multi point lid locking	Lid safety
Emergency lid release	Power failure release
Lid Spring Strut	Lid dropping safety
Lid lock detection	To run, lid must be shut
Imbalance detection	Eradicates user loading errors
Overspeed sensor	Safe detection of speed
Set inverter values	Electronic safety of speed
Barrier ring	Safety protection of chamber
Motor overheat sensor	Safe motor protection

Centurion Scientific Ltd Centrifuges comply to all relevant EU standards of quality and medical devices IEC 61010 and CE conformity test marks emission, immunity to EN/IEC 61326-1, Class B

Ô [} c^ } c

Mib]a]Wc Centrifuges

7 A %+ " %+ž\$\$\$'FWZ'fj Ł

T & [Á^ } dǎ * ^Á [{] | ^c'Á ã@Á } ^Á ^|^&ā } Á
[-Á Á & [č à^Á [q ! •

(

7 A &&" &&ž\$\$\$'FWZ'fj Ł

T & [Á^ } dǎ * ^Á [{] | ^c'Á ã@Á } ^Á ^|^&ā } Á
[-Á Á & [č à^Á [q ! •

5

7 A \$6"3ž4) \$'FWZ'fj Ł

T & [Á^ } dǎ * ^Á [{] | ^c'Á ã@Á } ^Á ^|^&ā } Á
cÁÍ { | Á Á Á Á € |

6

7 A %

T & [Á^ } dǎ * ^Á [{] | ^c'Á ã@Á } ^Á ^|^&ā } Á
cÁÍ { | Á Á Á Á € |

8

7 A \$(

T & [Á^ } dǎ * ^Á [{] | ^c'Á ã@Á } ^Á ^|^&ā } Á
cÁÍ { | Á Á Á Á € |

/%

4 Micro Centrifuges to 0.2Litre max Dual Centrifuges Complete with rotor



Display indicative only

Ambient Centrifuge

Speed	13,200 Rpm max (10Rpm steps)
Rcf Max	10 - 17,000G
Timer	0-9hours & Hold (30 sec steps)
Dims HWD	235 x 250 x 370mm
Weight	9.8 Kg (without rotor)
Power	125Watts
Memory	99 programs
Accel rates	10 programs
Decel rates	10 programs

PART NUMBERS

CM17A	with	BRK5424	rotor
CM17B	with	BRK5436	rotor
CM17C	with	BRK5448	rotor
CM17D	with	BRK5494	rotor

PART NUMBERS (110V 60HZ)

1.CM17A	with	BRK5424	rotor
1.CM17B	with	BRK5436	rotor
1.CM17C	with	BRK5448	rotor
1.CM17D	with	BRK5494	rotor

Rotor	BRK5424	BRK5436	BRK5448	BRK5494
Rotor type	24 x 2.2ml	36 x 0.5ml	48 x 0.2 to 0.4ml	4 x Pcr Strips
Tube size max	11 x 50mm	8 x 30mm	6 x 40mm	6 x 40mm
Minimum Rcf (G)	10	10	10	10
Maximum Rcf (G)	17,000	17,000	17,000	17,000
Maximum Rpm	13,200	13,200	13,200	13,200
Radius max cms	8.75cms	8.75cms	8.75cms	8.75cms
Sample tube angle °	45	45	45	45
Acceleration time (secs)	15	15	15	15
Deceleration time (secs)	15	15	15	15
Autoclavable (frequency)	121°C (10)	121°C (10)	121°C (10)	121°C (10)
Minimum Temperature @ 23°C	4°C	4°C	4°C	4°C



Reducers pack of 4

Rotor	BRK5424
Part number	RS04 (0.2- 0.4ml)
Tube size max	6 x 30mm
Part number	RS05 (0.5ml)
Tube size max	8 x 30mm

5 Micro Centrifuges to 0.2Litre max Dual Centrifuges Complete with rotor

Display indicative only



Ambient Centrifuge

Speed	15,000 Rpm max (10Rpm steps)
Rcf Max	10 - 22,000G
Timer	0-9hours & Hold (30 sec steps)
Dims HWD	235 x 250 x 370mm
Weight	9.8 Kg (without rotor)
Power	125Watts
Memory	99 programs
Accel rates	10 programs
Decel rates	10 programs

PART NUMBERS (230V50/60HZ)

CM22A with BRK5424 rotor
 CM22B with BRK5436 rotor
 CM22C with BRK5448 rotor
 CM22D with BRK5494 rotor

PART NUMBERS (110V 60HZ)

1.CM22A with BRK5424 rotor
 1.CM22B with BRK5436 rotor
 1.CM22C with BRK5448 rotor
 1.CM22D with BRK5494 rotor

Rotor	BRK5424	BRK5436	BRK5448	BRK5494
Rotor type	24 x 2.2ml	36 x 0.5ml	48 x 0.2 to 0.4ml	4 x Pcr Strips
Tube size max	11 x 50mm	8 x 30mm	6 x 40mm	6 x 40mm
Minimum Rcf (G)	10	10	10	10
Maximum Rcf (G)	22,000	22,000	22,000	22,000
Maximum Rpm	15,000	15,000	15,000	15,000
Radius max cms	8.75cms	8.75cms	8.75cms	8.75cms
Sample tube angle °	45	45	45	45
Acceleration time (secs)	15	15	15	15
Deceleration time (secs)	15	15	15	15
Autoclavable (frequency)	121°C (10)	121°C (10)	121°C (10)	121°C (10)
Minimum Temperature @ 23°C	4°C	4°C	4°C	4°C



Reducers pack of 4

Rotor	BRK5424
Part number	RS04 (0.2- 0.4ml)
Tube size max	6 x 30mm
Part number	RS05 (0.5ml)
Tube size max	8 x 30mm

CM06

6

Micro Centrifuge to 8 x 15 ml max Dual Centrifuges Complete with rotor



Display indicative only

PART NUMBERS (230V)

CM06A with BRK5408

PART NUMBERS (110V 60H)

1.CM06A with BRK5408 rotor

Rotor	BRK5408
Rotor type	8 x 15ml tube
Tube size max	17 x 120mm
Minimum Rcf (G)	10
Maximum Rcf (G)	3,500
Maximum Speed	6,000
Radius max cms	8.5
Sample tube angle °	30
Acceleration time (secs)	20
Deceleration time (secs)	20
Autoclavable (frequency)	121°C (10)
Minimum Temperature @ 23°C	4°C

Ambient Centrifuge

Speed	6,000 Rpm max (10 Rpm steps)
Rcf Max	10 - 3,500 G
Timer	0-9hours & Hold (30 sec steps)
Dims HWD	235 x 250 x 370mm
Weight	9.8 Kg (without rotor)
Power	125Watts
Memory	99 programs
Accel rates	10 programs
Decel rates	10 programs



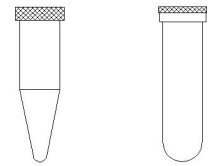
Reducers pack of 4 see page 7

Reducers Fixed angle rotor BRK5408 Pack of 4 (Tubes per rotor 8)

Capacity **Size. mm** **Part Number** **Rcf (G) max**

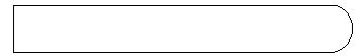
Tube type: Micro with cap. Shape:

0.2ml	6 x 20	R8.620	2250
0.4ml	6 x 30	R8.630	2410
0.5ml	8 x 20	R8.820	2250
1.5ml	11 x 38	R8.1138	2540
2.0ml	11 x 38	R8.1138	2540



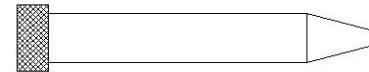
Tube type: Plain no cap. Shape: Round

1ml	6 x 45	R8.645	2660
3ml	10 x 60	R8.1060	2940
5ml	12 x 75	R8.1275	3180
6ml	12 x 82	R8.1282	3300
7ml	12 x 100	R8.12100	3500
9/10ml	14 x 100	R8.14100	3500
15ml	17 x 100	R8.17100	3500



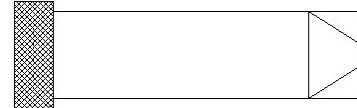
Tube type: Falcon with cap. Shape: Point

15ml	17 x 120	R8.17120	3500
------	----------	----------	------



Tube type: Falcon with cap. Shape: Square

12ml	17 x 100	R8.17100	3500
15ml	17 x 120	R8.17120	3500



Tube type: Nalgene. Oakridge with cap. Shape: Round

10ml	15 x 80	R8.1580	3500
------	---------	---------	------



Tube type: Monovette. Shape Square

1.1-1.4ml	8 x 82	R8.882	3300
2.7-3ml	11 x 82	R8.1182	3300
2.6-2.9ml	13 x 81	R8.1381	3500
4.5-5ml	11 x 108	R8.11108	3500
7.5-8.2ml	13 x 106	R8.13106	3500
4.5-5ml	15 x 92	R8.1592	3500
9-10ml	16 X 108	R8.16108	3500



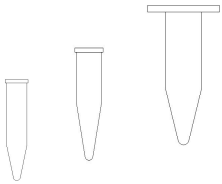
Tube type: Vacutainer. Shape: Round

1.6-5ml	13 x 82	R8.1382	3300
4-7ml	13 x 106	R8.13106	3500
7-9ml	15 x 92	R8.1592	3500
8.5-10ml	16 x 108	R8.16108	3500



Tube type: Vacuette. Shape: Round

1.6-5ml	13 x 82	R8.1382	3300
4-7ml	13 x 106	R8.13106	3500
7-9ml	15 x 92	R8.1592	3500
8.5-10ml	16 x 108	R8.16108	3500



8 Micro Centrifuge with Haematocrit rotor Dual Rotor Centrifuge Complete with rotor

Display indicative only



Ambient Centrifuge

Speed	13,000 Rpm max (10 Rpm steps)
Rcf Max	10 - 15,800 G
Timer	0-9hours & Hold (30 sec steps)
Dims HWD	235 x 250 x 370mm
Weight	9.8 Kg (without rotor)
Power	125 Watts
Memory	99 programs
Accel rates	10 programs
Decel rates	10 programs

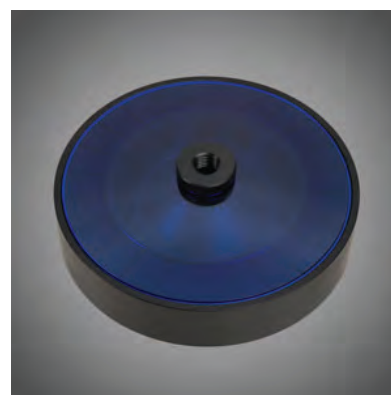
PART NUMBERS 230V 50/60Hz

CM13A with BRK5401 rotor

PART NUMBERS 110V 50/60Hz

1.CM13A with BRK5401 rotor

Rotor	BRK5401
Rotor type	24 x capillary & 12 x 2ml
Tube size max	2 x 75mm & 11 x 40mm
Minimum Rcf (G)	10
Maximum Rcf (G)	15,800
Maximum Speed	13,000
Radius max cms	8.4
Sample tube angle °	0 & 60
Acceleration time (secs)	25
Deceleration time (secs)	25
Autoclavable (frequency)	121°C (10)
Minimum Temperature (@ 23°C)	4°C



Why Does my Centrifuge and accessories need servicing?

A yearly service validates your warranty. As with every appliance you purchase servicing extends the lifetime of the product and negates the need for constant replacement. Which in turn equals money saving.

We appreciate how hard your Centrifuge is used and how it is an imperative tool for your laboratory.

Downtime is therefore not acceptable

However if it is regularly maintained you improve its reliability and extend its life Our Pro-Care parts offer you all that is needed to service our Centrifuges correctly. Full instructions on replacement and any necessary adjustments are included

Using a third party service company without training and the correct parts is not acceptable. All our distributors, for products sold outside of the UK have received training and authority to service our centrifuges.

NOTE

Centrifuges can be dangerous.

Although Centurion Scientific Ltd has an exceptional reputation , if a rotor lid or poor seals are not replaced regularly, breakage, can result in severe damage further.

Servicing of our Centrifuges are also a requirement to validate your warranty, authorised distributors and Centurion Scientific Ltd parts are to be used.

Please be sure to contact the sales team for full parts pricing and further information .

Call us on: Tel +44(0)2392 631225
Email: sales@centurionscientific.co.uk

WWW.Servicepro-care.com

Micro Centrifuge with Swing out rotor Dual Rotor Centrifuge complete with rotor

Display indicative only



Ambient Centrifuge

Speed	4,000 Rpm max (10 Rpm steps)
Rcf Max	10 - 1500 G
Timer	0-9hours & Hold (30 sec steps)
Dims HWD	235 x 250 x 370mm
Weight	9.8 Kg (without rotor)
Power	125 Watts
Memory	99 programs
Accel rates	10 programs
Decel rates	10 programs

PART NUMBERS 230V 50/60Hz

CM04SO with BRK5508S rotor

PART NUMBERS 110V 50/60Hz

1.CM04SO with BRK5508S rotor

BRK5508S Swing out rotor

Capacity	8 x 5ml
Tube size	13 x 82mm max
Minimum Rcf (G)	10
Maximum Rcf (G)	1,500
Maximum Speed	4,000
Radius max cms	9.0
Sample tube angle °	0
Acceleration time (secs)	15
Deceleration time (secs)	15
Autoclavable (frequency)	121°C (10)
Minimum Temperature @ 23°C	4°C



11 Small Swing out Rotor 1520 Rcf (G)



BRK5508S Rotor Buckets supplied (set of 8)

Capacity	8 x 5ml
Tube size	13 x 82mm max
Minimum Rcf (G)	10
Maximum Rcf (G)	1,520
Maximum Speed	4,000
Radius max cms	8.5
Sample tube angle °	0
Acceleration time (secs)	15
Deceleration time (secs)	15
Autoclavable (frequency)	121°C (10)
Minimum Temperature @ 23°C	4°C

Ideal for small Blood samples or 4.5ml general samples

Reducers Swing out rotor BRK5508S Pack of 4 (Tubes per rotor 8)

Capacity **Size. mm** **Part Number** **Rcf (G) max**

Tube type: Micro with cap. Shape: Point

0.2ml	6 x 20	RS.620	800
0.4ml	6 x 30	RS.630	1000
0.5ml	8 x 20	RS.820	800
1.5ml	11 x 38	RS.1138	1100
2.0ml	11 x 38	RS.1138	1100

Tube type: Plain no cap. Shape: Round

1ml	6 x 45	RS.645	1300
3ml	10 x 60	RS.1060	1520
5ml	12 x 75	RS.1275	1520
6ml	12 x 82	RS.1282	1520

Tube type: Nalgene. Oakridge with cap. Shape: Round

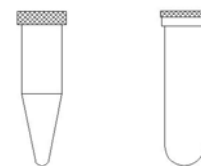
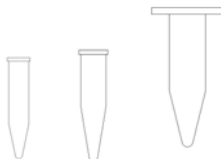
10ml	15 x 80	RS.1580	1520
------	---------	---------	------

Tube type: Monovette. Shape Square

1.1-1.4ml	8 x 82	RU.882	1520
2.7-3ml	11 x 82	RU.1182	1520
2.6-2.9ml	13 x 81	RU.1381	1520

Tube type: Vacutainer. Shape: Round

1.6-5ml	13 x 82	RU.1382	1520
---------	---------	---------	------





WolfLabs

Pricing on any accessories shown can be found by keying the part number into the search box on our website.

The specifications listed in this brochure are subject to change by the manufacturer and therefore cannot be guaranteed to be correct. If there are aspects of the specification that must be guaranteed, please provide these to our sales team so that details can be confirmed.

www.wolflabs.co.uk

Tel : 01759 301142

Fax : 01759 301143

sales@wolflabs.co.uk

Please contact us if this literature doesn't answer all your questions.